



RECP #: 752719

RECORDED 5/8/2019 AT 1:13 PM BK# 2620 PG# 1761
Debra K. Lee, CLERK OF LARAMIE COUNTY, WY PAGE 1 OF 1

STATE OF WYOMING CORNER RECORD

(In compliance with the CORNER PERPETUATION AND FILING ACT, Wyoming Statutes, 1997 Section 33-29-140, et. seq., and the Rules and Regulations of the Board of Registrations for Professional Engineers and Professional Land Surveyors)

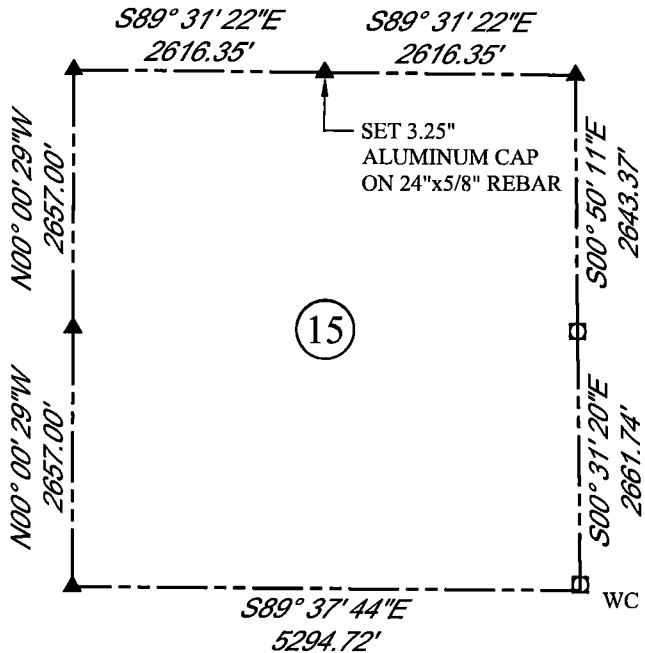
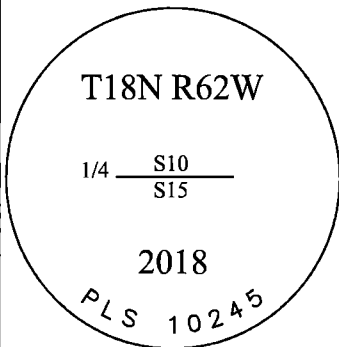
NORTH QUARTER CORNER SECTION 15, T. 18 N., R. 62 W., 6TH P.M., LARAMIE COUNTY, WYOMING

GLO: SET A SANDSTONE 16X14X6, 10IN. DEEP, MARKED 1/4 ON N. SIDE FOR 1/4 SEC. COR.

FOUND: NOTHING. SET ALUMINUM CAP AT PROPORTIONATE (SINGLE) DISTANCE.



SCALE: NONE
NORTH DETERMINED BY
G.P.S OBSERVATIONS
SET: 3.25" ALUMINUM CAP ON
REBAR AT SURFACE,
STAMPED AS SHOWN. SET
CORNER +/- 14' NORTHERLY
OF EAST/WEST FENCE LINE.
SET ORANGE FIBERGLASS
ROD ON WEST SIDE.



LEGEND:

- FOUND BLM CAP
- FOUND USFS CAP
- FOUND STONE
- FOUND PRIVATE MONUMENT
- ◇ CALCULATED POSITION
- ▲ SET MONUMENT (LS10245)
- SECTION LINE

DATE OF FIELD WORK: 10/1/2018 OFFICE REFERENCE: MERIDEN

CROSS INDEX DIAGRAM

	1	2	3	4	5	6	7	8	9	10	11	12	13	14	15	16	17	18	19	20	21	22	23	24	25
A																									
B																									
C		6																							
D						5																			
E																									
F																									
G			7																						
H																									
J																									
K																									
L																									
M																									
N																									
O																									
P																									
Q																									
R																									
S																									
T																									
U																									
V																									
W																									
X																									
Y																									
Z																									
	1	2	3	4	5	6	7	8	9	10	11	12	13	14	15	16	17	18	19	20	21	22	23	24	25

WOOD
2615 AVIATION DRIVE
SHERIDAN, WY 82801
PH: 307-675-6400

wood.

THIS CORNER RECORD WAS
PREPARED BY ME OR UNDER
MY DIRECTION AND
SUPERVISION,
SEAL AND SIGNATURE

